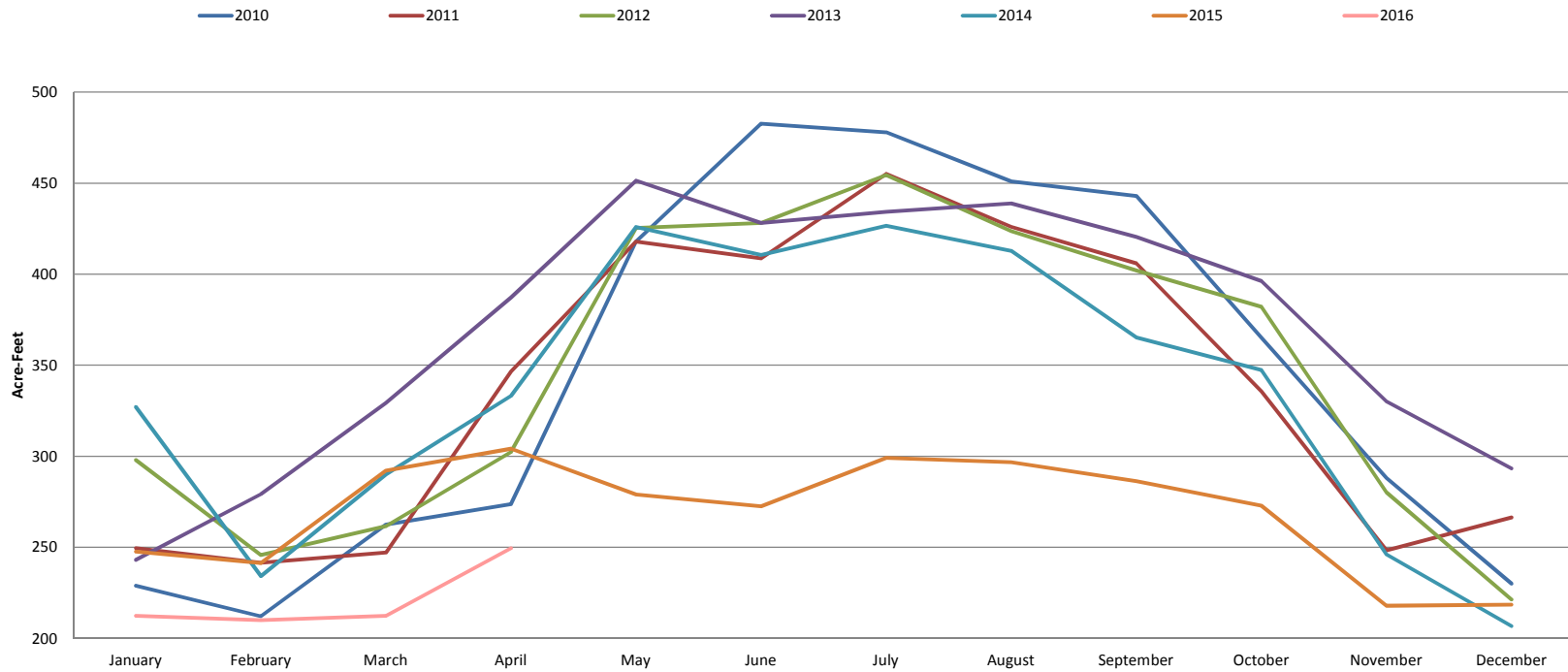


Production by Month (acre-feet)

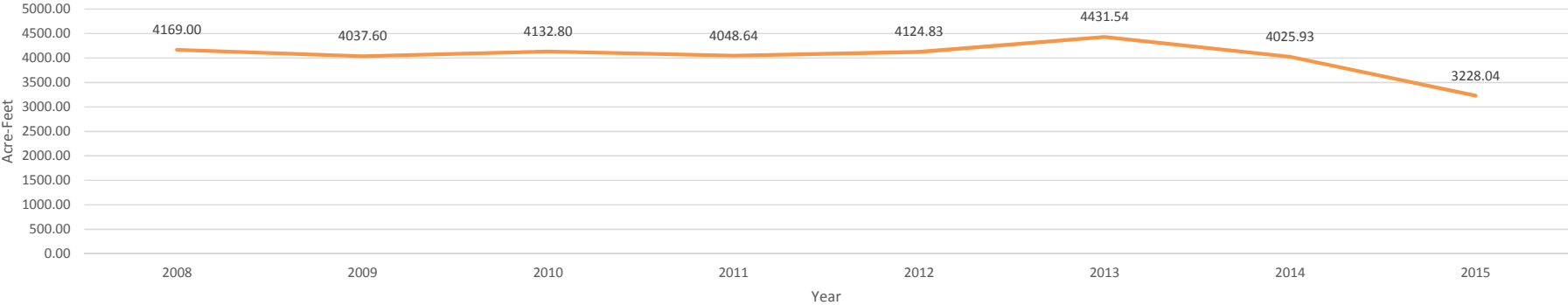
	2008	2009	2010	2011	2012	2013	2014	2015	2016
January	250.00	339.10	228.90	249.50	297.99	243.06	327.14	247.66	212.37
February	234.00	218.80	212.10	241.52	245.82	279.08	234.16	241.34	209.91
March	295.00	277.40	262.40	247.05	261.68	329.29	290.01	292.16	212.37
April	355.00	349.20	273.70	346.48	302.29	387.29	333.28	304.13	249.50
May	461.00	379.30	418.00	417.98	425.35	451.43	425.96	278.96	
June	415.00	385.50	482.70	408.78	428.11	428.11	410.62	272.52	
July	415.00	415.80	478.00	455.12	454.50	434.25	426.58	299.06	
August	410.00	395.30	451.00	425.96	423.48	438.85	412.77	296.76	
September	395.00	371.00	443.00	406.01	402.02	420.44	365.20	286.33	
October	369.00	326.80	365.00	335.59	382.08	396.27	347.40	272.82	
November	303.00	308.70	288.00	248.27	280.19	330.21	246.12	217.89	
December	267.00	270.70	230.00	266.38	221.32	293.26	206.69	218.41	
TOTAL	4169.00	4037.60	4132.80	4048.64	4124.83	4431.54	4025.93	3228.04	884.15

* Production data taken from Marina Coast Water District Well Production Summaries

2010-2016 Total Production by Month (Acre-Feet)

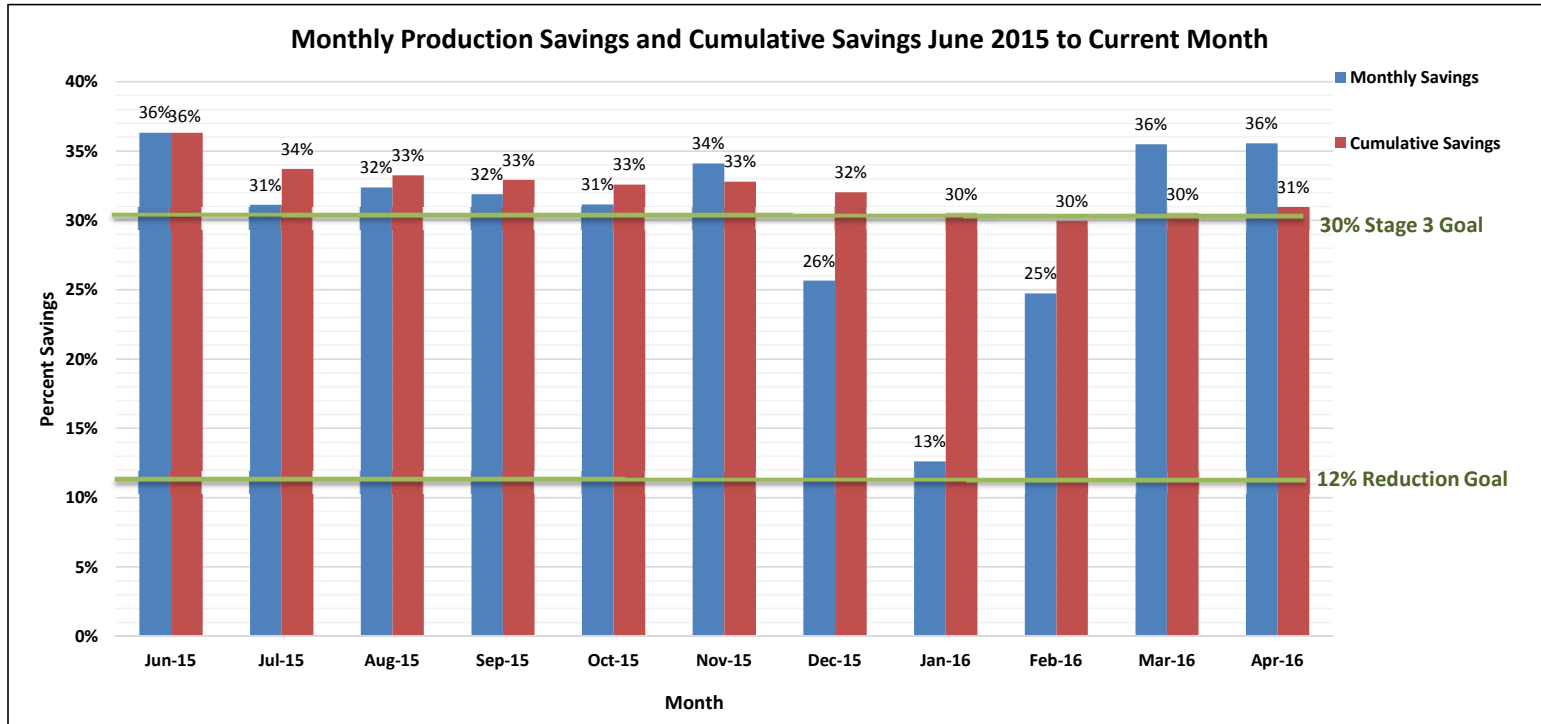


Production by Year 2008-2016



Monthly Production Savings and Cumulative Savings June 2015 to Current Month

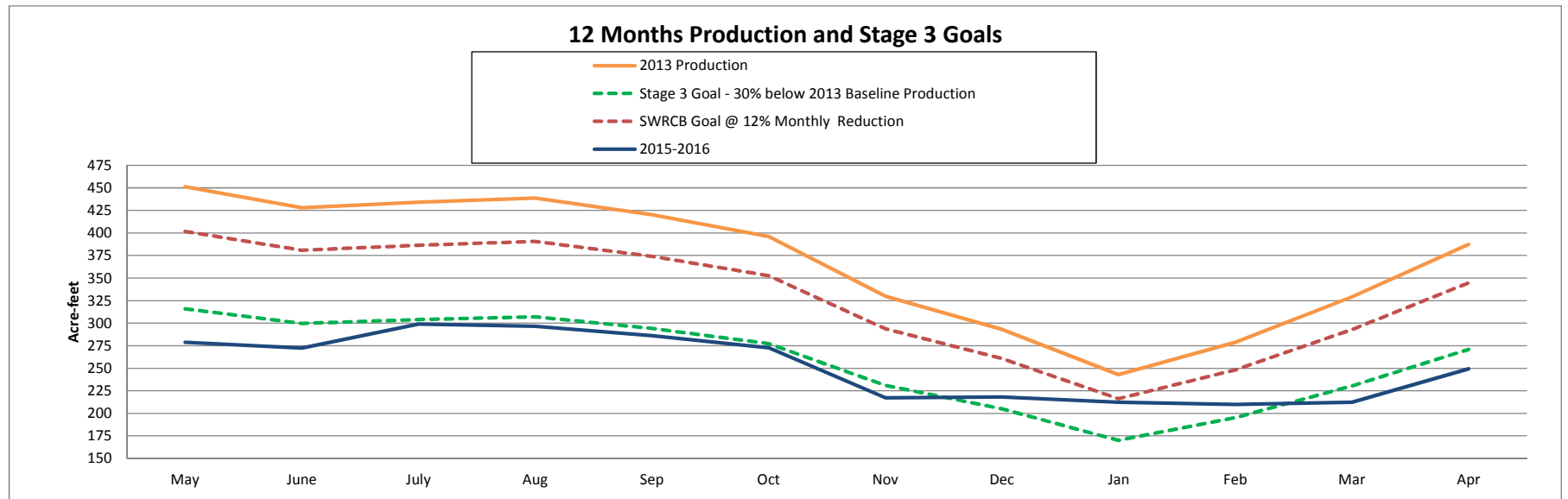
	2013 Water Prod (AF)	Monthly Water Prod (AF)	Monthly Savings (AF)	Monthly Savings	Cumulative Savings
Jun-15	428	273	156	36%	36%
Jul-15	434	299	135	31%	34%
Aug-15	439	297	142	32%	33%
Sep-15	420	286	134	32%	33%
Oct-15	396	273	123	31%	33%
Nov-15	330	218	113	34%	33%
Dec-15	293	218	75	26%	32%
Jan-16	243	212	31	13%	30%
Feb-16	279	210	69	25%	30%
Mar-16	329	212	117	36%	30%
Apr-16	387	250	138	36%	31%
May-16	451				
Jun-16	428				
Jul-16	434				
Total	4432	1863	1233	-	30%



Monthly Production Reduction Performance

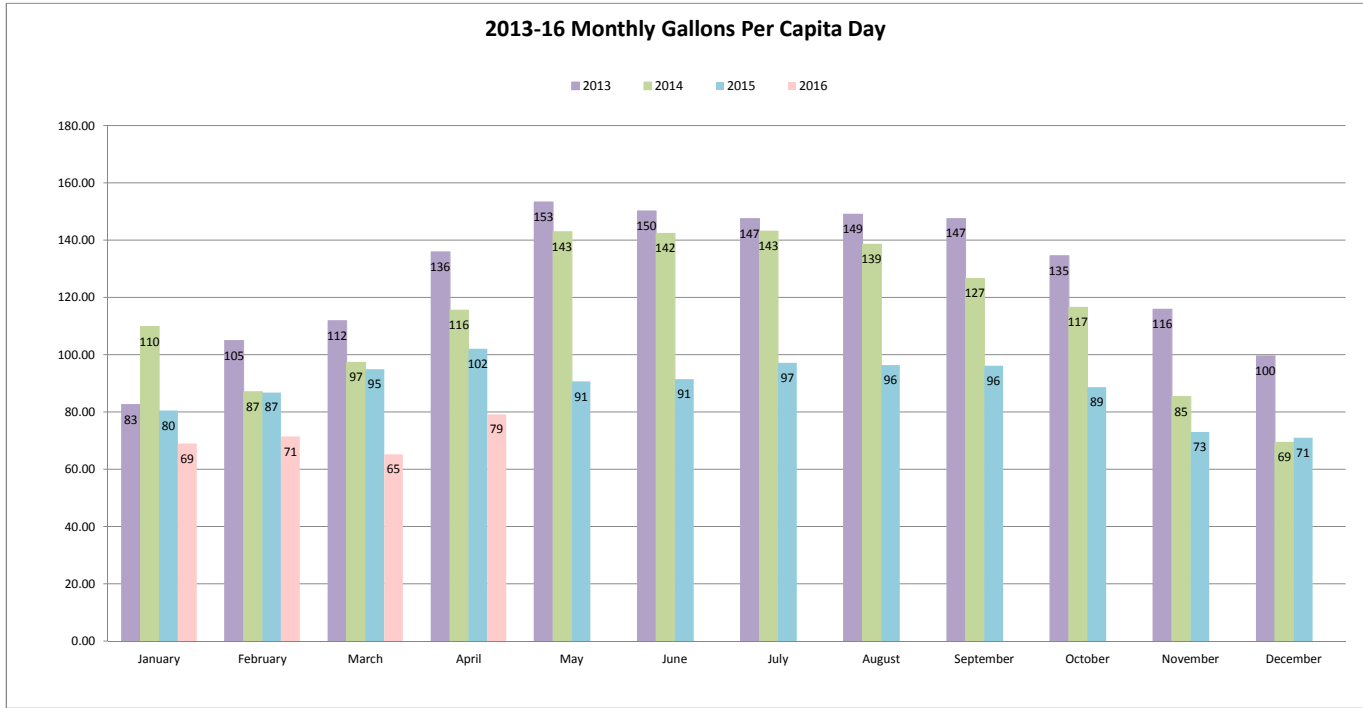
	Acre-Feet								
	*2013 Production	Monthly Production Savings and Cumulative Savings June 2015 to	SWRCB Goal @ 12% Monthly Reduction	*2014 Production	2014 Performance Beyond 30% Goal Below 30% Goal	*2015 Production	2015 Performance Beyond 30% Goal Below 30% Goal	*2016 Production	2016 Performance Beyond 30% Goal Below 30% Goal
Jan	243.06	170.14	216.32	327.14	157.00	247.66	77.52	212.37	42.23
Feb	279.08	195.36	248.38	234.16	38.80	241.34	45.98	209.91	14.55
Mar	329.29	230.50	293.07	290.01	59.51	292.16	61.66	212.37	-18.13
Apr	387.29	271.10	344.69	333.28	62.18	304.13	33.03	249.5	-21.60
May	451.43	316.00	401.77	425.96	109.96	278.96	-37.04		
June	428.11	299.68	381.02	410.62	110.94	272.52	-27.16		
July	434.25	303.98	386.48	426.58	122.61	299.06	-4.91		
Aug	438.85	307.20	390.58	412.77	105.58	296.76	-10.44		
Sep	420.44	294.31	374.19	365.2	70.89	286.33	-7.98		
Oct	396.27	277.39	352.68	347.4	70.01	272.82	-4.57		
Nov	330.21	231.15	293.89	246.12	14.97	217.52	-13.63		
Dec	293.26	205.28	261.00	206.69	1.41	218.41	13.13		

* Production data taken from Marina Coast Water District Well Production Summaries



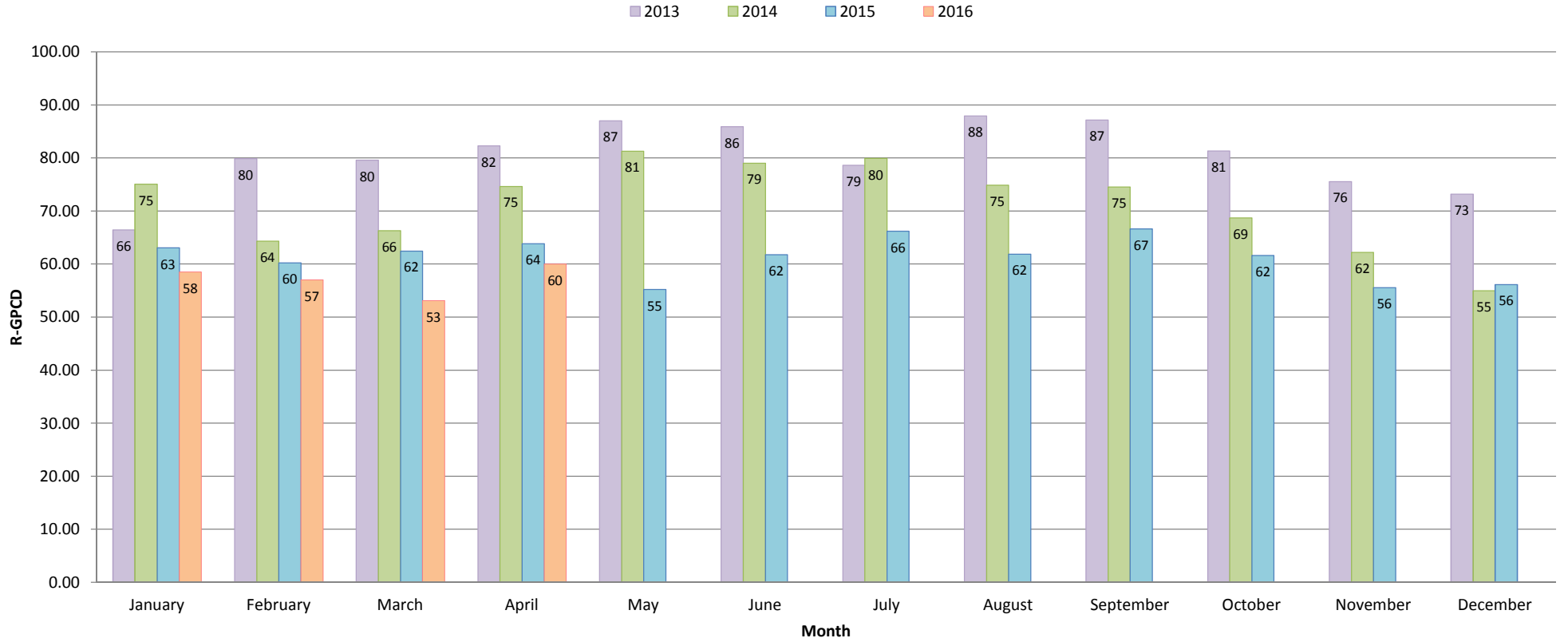
2016					
# of days		Production (AF)	Production (Gallons)	Population	GPCD
31	January	212.37	69,200,976.87	32,375	68.95
28	February	209.91	68,399,383.41	34,235	71.35
31	March	212.37	69,200,976.87	34,235	65.20
30	April	249.5	81,299,824.50	34,235	79.16
31	May			34,235	
30	June			34,235	
31	July			34,235	
31	August			34,235	
30	September			34,235	
31	October			34,235	
30	November			34,235	
31	December			34,235	
365	2016 Year	884.15	288,101,161.65	34,516	68.50

District Baseline and GPCD Targets (Gross Production)		
Description	Year	Amount (gpcd)
Baseline GPCD	2008	133
Maximum Allowable Target	2020	126
Interim GPCD Target	2015	125
2020 GPCD Target	2020	117
2014 GPCD	2014	115
2015 GPCD	2015	89



	2013				2014				2015				2016			
	Production (Gallons)	% Residential Use	Population	R-GPCD	Production (Gallons)	% Residential Use	Population	R-GPCD	Production (Gallons)	% Residential Use	Population	R-GPCD	Production (Gallons)	% Residential Use	Population	R-GPCD
January	79,201,344.06	80.49%	30,961	66.42	106,598,896.14	68.37%	31,325	75.05	80,700,258.66	78.39%	32,375	63.03	69,200,976.87	84.83%	32,375	58.49
February	90,938,497.08	76.16%	30,961	79.89	76,301,270.16	73.90%	31,325	64.29	78,640,880.34	69.40%	32,375	60.21	68,399,383.41	79.89%	34,235	57.01
March	107,299,475.79	71.17%	30,961	79.57	94,500,048.51	68.11%	31,325	66.28	95,200,628.16	65.81%	32,375	62.42	69,200,976.87	81.41%	34,235	53.08
April	126,198,833.79	60.57%	30,961	82.30	108,599,621.28	64.56%	31,325	74.61	99,101,064.63	62.57%	32,375	63.84	81,299,824.50	75.76%	34,235	59.97
May	147,098,916.93	56.76%	30,961	86.99	138,799,491.96	56.86%	31,325	81.27	90,899,394.96	60.93%	32,375	55.18			34,235	
June	139,500,071.61	57.18%	30,961	85.87	133,800,937.62	55.50%	31,325	79.02	88,800,914.52	67.54%	32,375	61.75			34,235	
July	141,500,796.75	53.32%	30,961	78.61	139,001,519.58	55.82%	31,325	79.90	97,449,000.06	68.15%	32,375	66.17			34,235	
August	142,999,711.35	59.01%	30,961	87.92	134,501,517.27	54.06%	31,325	74.87	96,699,542.76	64.22%	32,375	61.87			34,235	
September	137,000,794.44	59.09%	30,961	87.16	119,000,785.20	58.85%	31,325	74.52	93,300,916.83	69.37%	32,375	66.64			34,235	
October	129,124,975.77	60.44%	30,961	81.32	113,200,637.40	58.92%	31,325	68.69	88,898,669.82	69.57%	32,375	61.62			34,235	
November	107,599,258.71	65.20%	30,961	75.54	80,198,448.12	72.89%	31,325	62.20	70,999,674.39	75.97%	32,375	55.53			34,235	
December	95,559,064.26	73.47%	30,961	73.15	67,350,143.19	79.24%	31,325	54.96	71,169,116.91	79.15%	32,375	56.13			34,235	

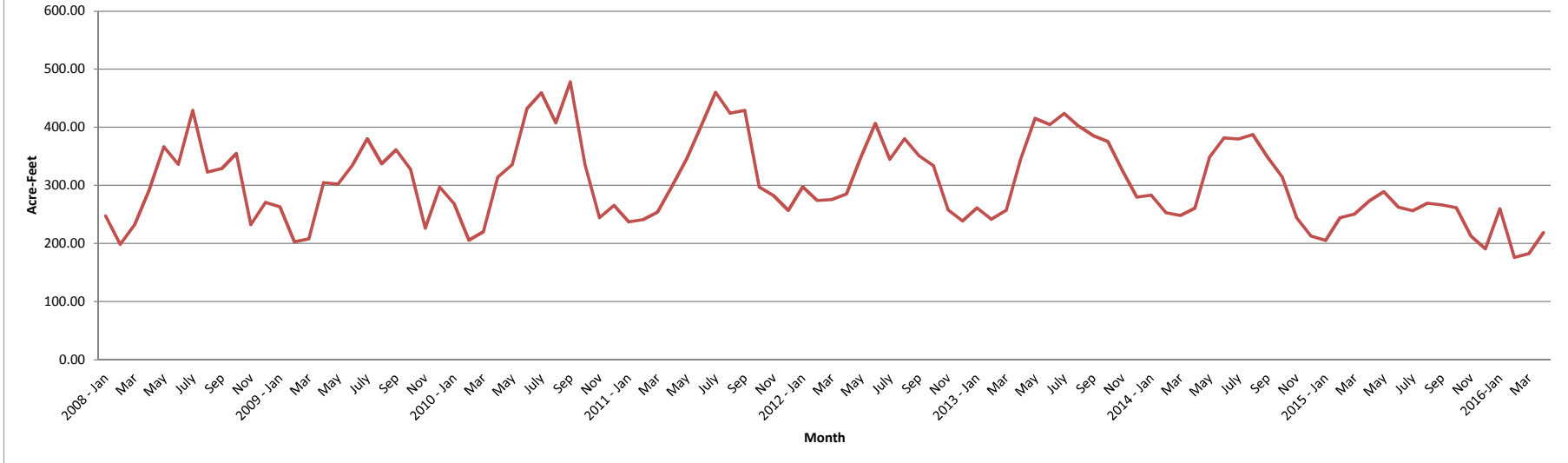
2013-2016 Residential Gallons-per-Capita-Day



Annual Total Estimated Consumption by Month (Acre-Feet)

	2008	2009	2010	2011	2012	2013	2014	2015	2016
January	247.67	263.53	268.67	237.52	297.91	261.57	283.58	205.30	259.91
February	198.52	203.24	205.89	241.48	274.32	241.92	253.28	244.47	176.27
March	232.79	208.08	220.13	254.20	275.92	256.96	248.67	250.91	182.79
April	292.16	305.05	314.48	298.94	285.28	345.55	260.80	273.19	218.77
May	366.50	302.44	336.18	346.00	349.02	415.61	348.87	288.98	
June	336.62	335.01	432.19	402.48	406.93	405.02	381.85	263.02	
July	429.20	380.63	459.50	460.59	345.06	424.05	380.15	256.84	
August	322.95	337.48	407.87	424.59	380.61	402.30	387.74	269.34	
September	329.35	361.62	478.48	429.27	351.55	385.60	348.87	266.76	
October	355.18	327.83	335.42	297.07	334.00	375.63	314.94	261.86	
November	232.73	226.62	244.55	282.55	257.89	326.16	244.46	213.44	
December	270.89	297.50	265.62	257.27	239.06	279.91	213.03	190.92	
Total	3614.56	3549.05	3968.99	3931.94	3797.56	4120.28	3666.23	2973.68	

2008 - 2016 Annual Total Consumption by Month (Acre-Feet)

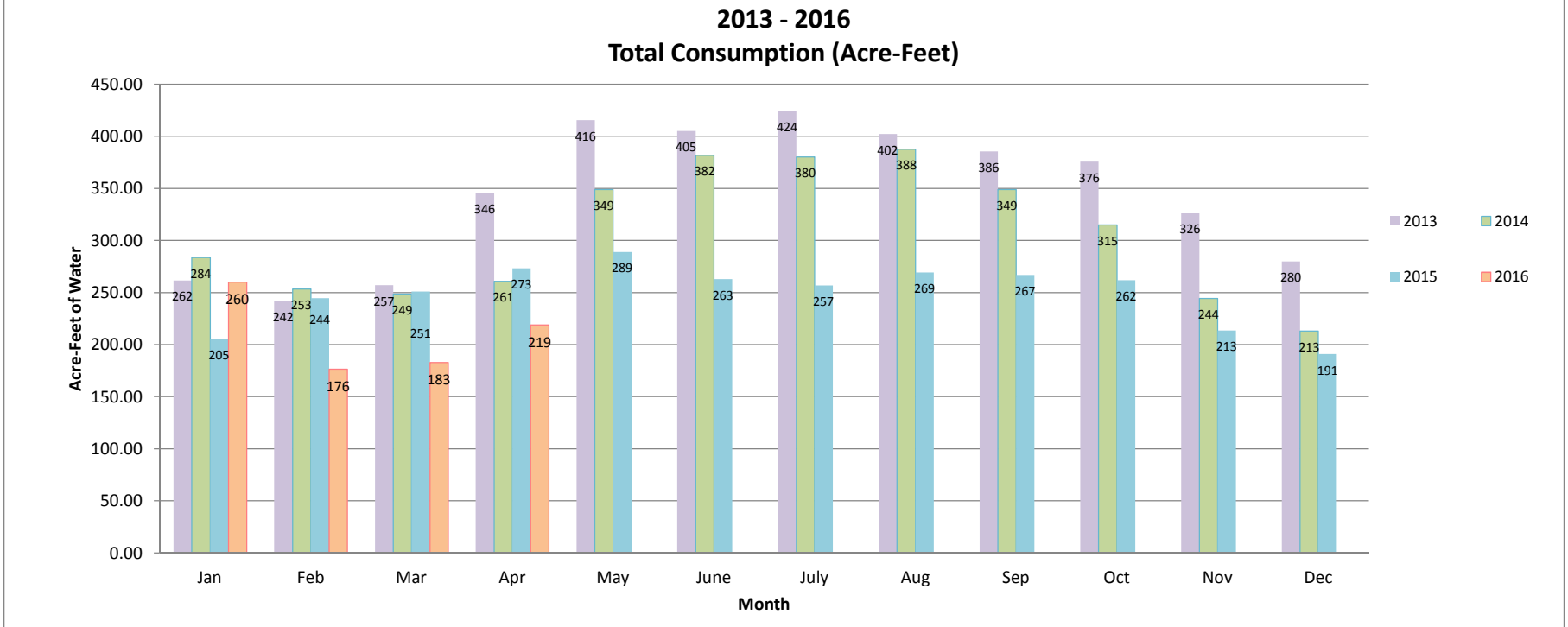


**Metered + Unmetered Consumption (Acre-Feet)
2013 - 2016**

Metered Consumption				
	2013	2014	2015	2016
Jan	230.15	260.74	184.03	239.08
Feb	210.50	230.44	223.34	155.44
Mar	225.54	225.83	229.77	160.41
Apr	314.13	237.96	252.06	196.38
May	384.19	326.03	267.95	
June	373.60	359.01	242.02	
July	392.63	357.31	235.70	
Aug	370.88	364.90	248.20	
Sep	354.18	326.03	245.63	
Oct	344.21	292.10	240.72	
Nov	294.74	221.62	192.62	
Dec	248.49	190.19	170.09	
TOTAL	3743.24	3392.15	2720.77	

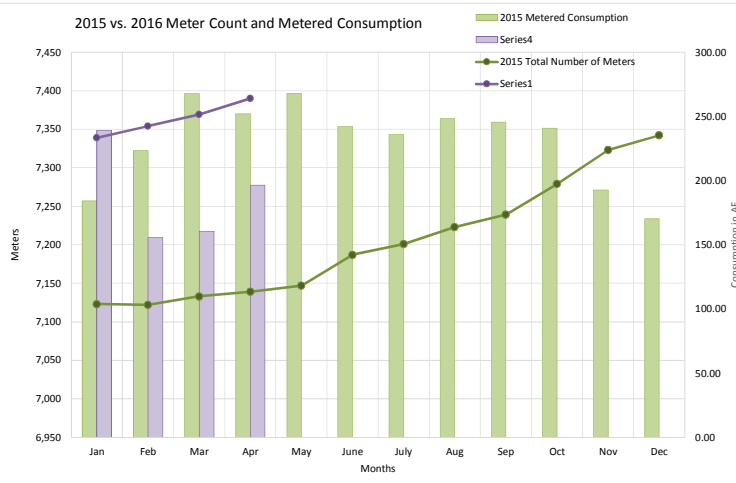
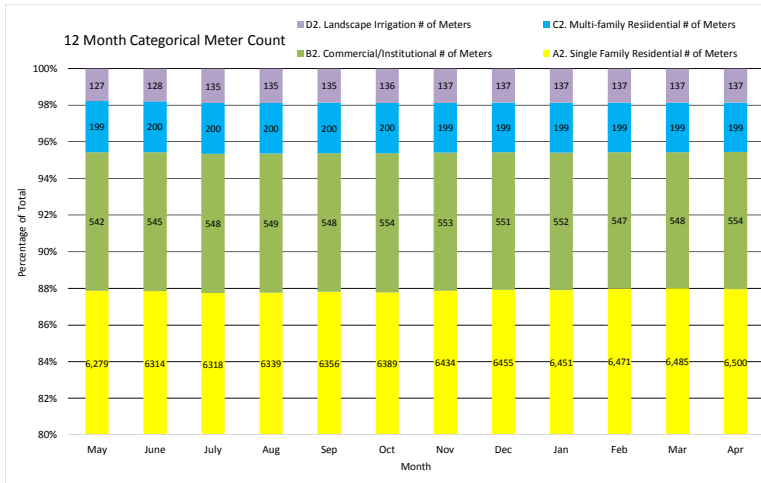
Estimated Unmetered Consumption				
	2013	2014	2015	2016
Jan	31.42	22.84	21.28	20.83
Feb	31.42	22.84	21.14	20.83
Mar	31.42	22.84	21.14	22.38
Apr	31.42	22.84	21.14	22.38
May	31.42	22.84	21.02	
June	31.42	22.84	21.00	
July	31.42	22.84	21.14	
Aug	31.42	22.84	21.14	
Sep	31.42	22.84	21.14	
Oct	31.42	22.84	21.14	
Nov	31.42	22.84	20.83	
Dec	31.42	22.84	20.83	
TOTAL	377.00	274.12	252.91	

Total Consumption				
	2013	2014	2015	2016
Jan	261.57	283.58	205.30	259.91
Feb	241.92	253.28	244.47	176.27
Mar	256.96	248.67	250.91	182.79
Apr	345.55	260.80	273.19	218.76
May	415.61	348.87	288.98	
June	405.02	381.85	263.02	
July	424.04	380.15	256.84	
Aug	402.29	387.74	269.34	
Sep	385.60	348.87	266.76	
Oct	375.62	314.94	261.86	
Nov	326.15	244.46	213.44	
Dec	279.90	213.03	190.92	
TOTAL	4120.24	3666.27	2973.68	



2016

2016 Metered Consumption (Units) and # of Meters														
This data is from Summary by Rate Code														
Marina & Ord Combined														
	Jan	Feb	Mar	Apr	May	June	July	Aug	Sep	Oct	Nov	Dec	Total	
A1. Single Family Residential Metered Consumption	58,143	36,984	38,935	44,055	0	0	0	0	0	0	0	0	0	178,117
A2. Single Family Residential # of Meters	6,451	6,471	6,485	6,500	0	0	0	0	0	0	0	0	0	409
B1. Commercial/Institutional Metered Consumption	15,706	14,398	13,305	20,044	0	0	0	0	0	0	0	0	0	146
B2. Commercial/Institutional # of Meters	552	547	548	554	0	0	0	0	0	0	0	0	0	146
C1. Multi-family Residential Metered Consumption	28,828	15,291	16,143	18,395	0	0	0	0	0	0	0	0	0	181
C2. Multi-family Residential # of Meters	199	199	199	199	0	0	0	0	0	0	0	0	0	181
D1. Landscape Irrigation Metered Consumption	1,475	1,042	1,493	3,057	0	0	0	0	0	0	0	0	0	16
D2. Landscape Irrigation # of Meters	137	137	137	137	0	0	0	0	0	0	0	0	0	16
Total Meters	7,339	7,354	7,369	7,390	0	0	0	0	0	0	0	0	0	
Total Metered Consumption (AF)	239.08	155.44	160.40	196.38	0.00	0.00	0.00	0.00	0.00	0.00	0.00	0.00	0.00	751
2016 TOTAL METERED CONSUMPTION														
Marina														
	Jan	Feb	Mar	Apr	May	June	July	Aug	Sep	Oct	Nov	Dec	Total	
A1. Single Family Residential Metered Consumption	35,950	18,675	20,527	23,967										99,119
A2. Single Family Residential # of Meters	3,459	3,460	3,461	3,463										
B1. Commercial/Institutional Metered Consumption	10,393	5,942	6,258	8,694										31,287
B2. Commercial/Institutional # of Meters	248	248	249	249										
C1. Multi-family Residential Metered Consumption	24,255	12,474	13,325	15,377										65,431
C2. Multi-family Residential # of Meters	173	173	173	173										
D1. Landscape Irrigation Metered Consumption	183	138	198	252										771
D2. Landscape Irrigation # of Meters	36	36	36	36										
Total Meters	3,916	3,917	3,919	3,921	0	0	0	0	0	0	0	0	0	
Total Metered Consumption (AF)	162.48	85.46	92.53	110.85	0.00	0.00	0.00	0.00	0.00	0.00	0.00	0.00	0.00	451
2016 TOTAL MARINA METERED CONSUMPTION														
Ord														
	Jan	Feb	Mar	Apr	May	June	July	Aug	Sep	Oct	Nov	Dec	Total	
A1. Single Family Residential Metered Consumption	22,193	18,309	18,408	20,088										78,998
A2. Single Family Residential # of Meters	2,992	3,011	3,024	3,037										
B1. Commercial/Institutional Metered Consumption	5,313	8,456	7,047	11,350										32,166
B2. Commercial/Institutional # of Meters	304	299	299	305										
C1. Multi-family Residential Metered Consumption	4,573	2,817	2,818	3,018										13,226
C2. Multi-family Residential # of Meters	26	26	26	26										
D1. Landscape Irrigation Metered Consumption	1,292	904	1,295	2,805										6,296
D2. Landscape Irrigation # of Meters	101	101	101	101										
Total Meters	3,423	3,437	3,450	3,469	0	0	0	0	0	0	0	0	0	
Total Metered Consumption (AF)	76.60	69.98	67.87	85.53	0.00	0.00	0.00	0.00	0.00	0.00	0.00	0.00	0.00	300
2016 TOTAL ORD METERED CONSUMPTION														

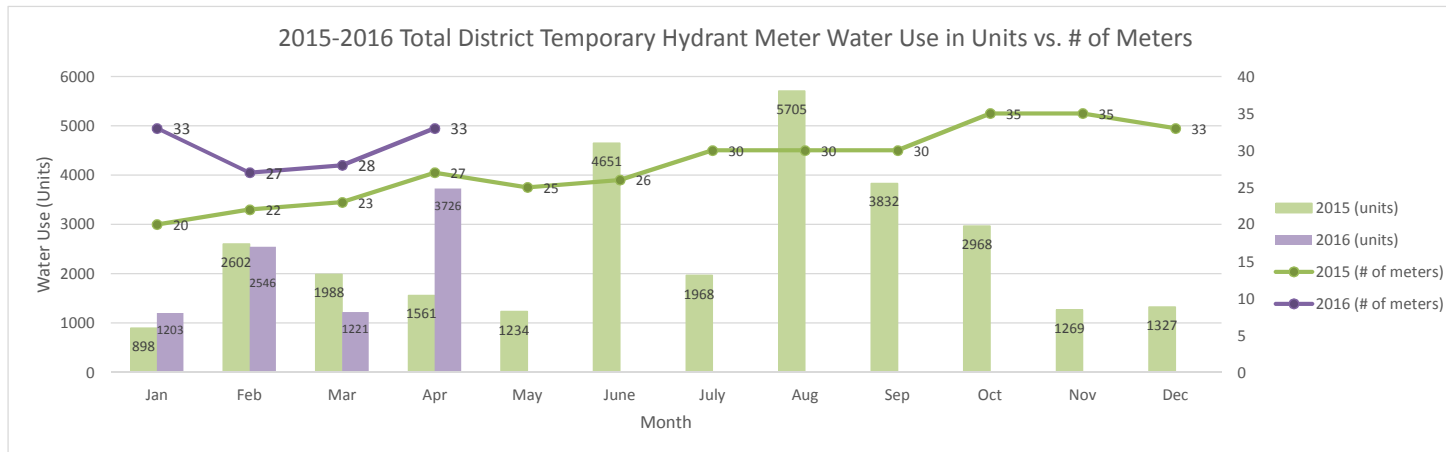


Temporary Hydrant Meters Water Use (Units)

Marina												
	Jan	Feb	Mar	Apr	May	June	July	Aug	Sep	Oct	Nov	Dec
2014 (units)	2	0	1	0	14	0	0	0	5	3	1	0
2015 (units)	0	0	0	0	0	17	0	0	0	0	0	0
2016 (units)	0	0	0	1								
2015 (# of meters)	0	0	0	0	0	1	0	0	0	0	0	0
2016 (# of meters)	1	0	1	1								

Ord												
	Jan	Feb	Mar	Apr	May	June	July	Aug	Sep	Oct	Nov	Dec
2014 (units)	1075	1124	2316	1655	2563	3142	4421	2732	1767	3207	960	362
2015 (units)	898	2602	1988	1561	1234	4634	1968	5705	3832	2968	1269	1327
2016 (units)	1203	2546	1221	3725								
2015 (# of meters)	20	22	23	27	25	25	30	30	30	35	35	33
2016 (# of meters)	32	27	27	32								

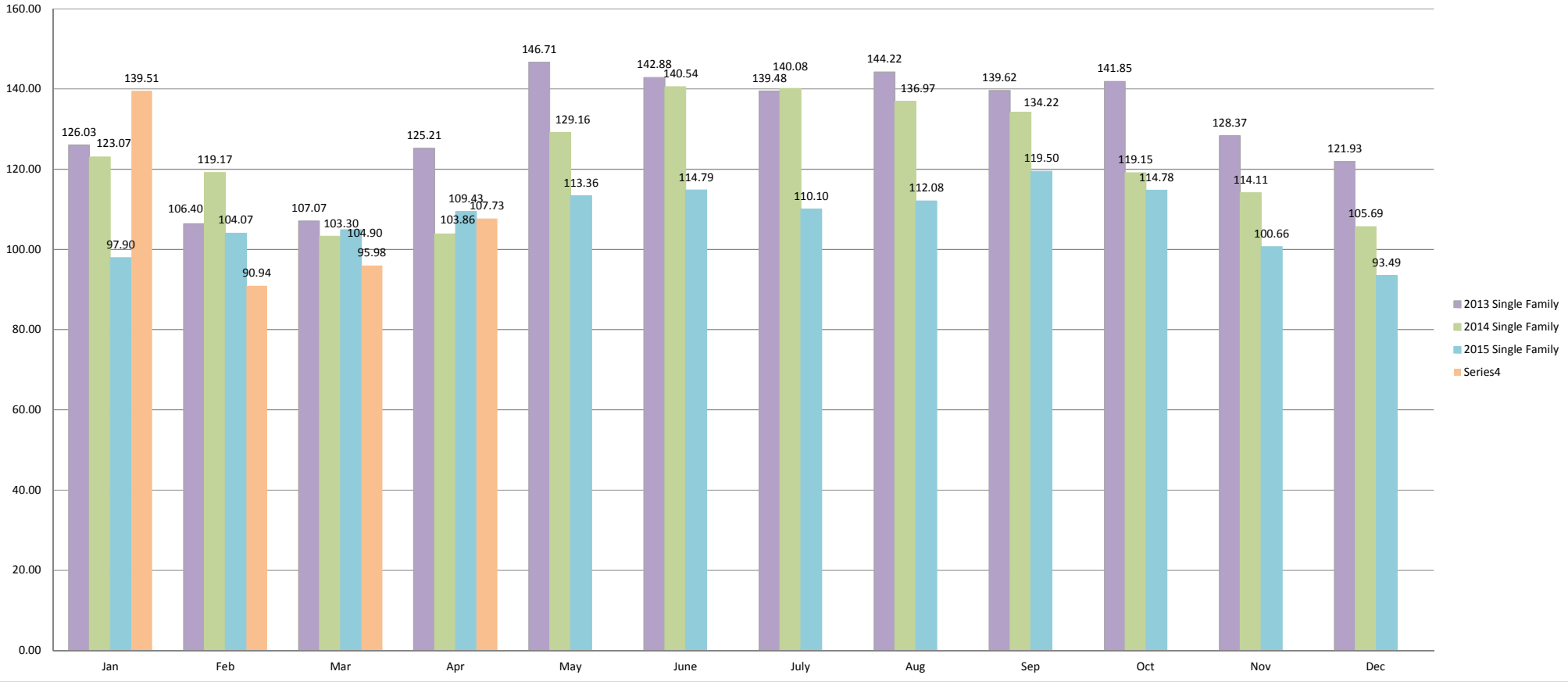
TOTAL												
	Jan	Feb	Mar	Apr	May	June	July	Aug	Sep	Oct	Nov	Dec
2014 (units)	1077	1124	2317	1655	2577	3142	4421	2732	1772	3210	961	362
2015 (units)	898	2602	1988	1561	1234	4651	1968	5705	3832	2968	1269	1327
2016 (units)	1203	2546	1221	3726								
2015 (# of meters)	20	22	23	27	25	26	30	30	30	35	35	33
2016 (# of meters)	33	27	28	33								



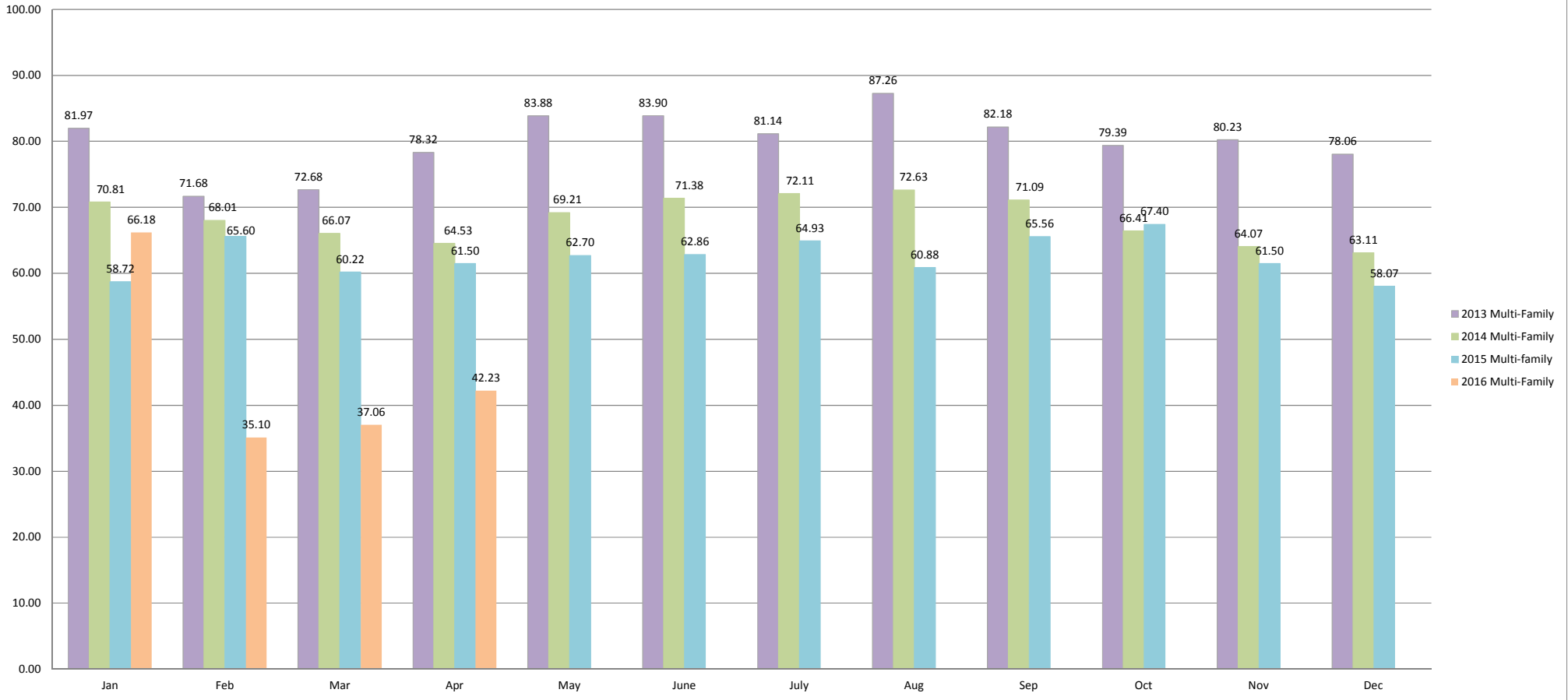
Temporary Meter Water Use: Percentage of Total Production

Past 12 Months												
	May	June	July	Aug	Sep	Oct	Nov	Dec	Jan	Feb	Mar	Apr
Production (HCF)	121523.3	118718	130280	129278	124734	118849	94919	95146	92515	91443	92515	108690
Temporary Hydrant Use (HCF)	1988	1561	1234	4651	1968	5705	3832	2968	1203	2546	1221	3726
Percentage	1.6%	1.3%	0.9%	3.6%	1.6%	4.8%	4.0%	3.1%	1.3%	2.8%	1.3%	3.4%

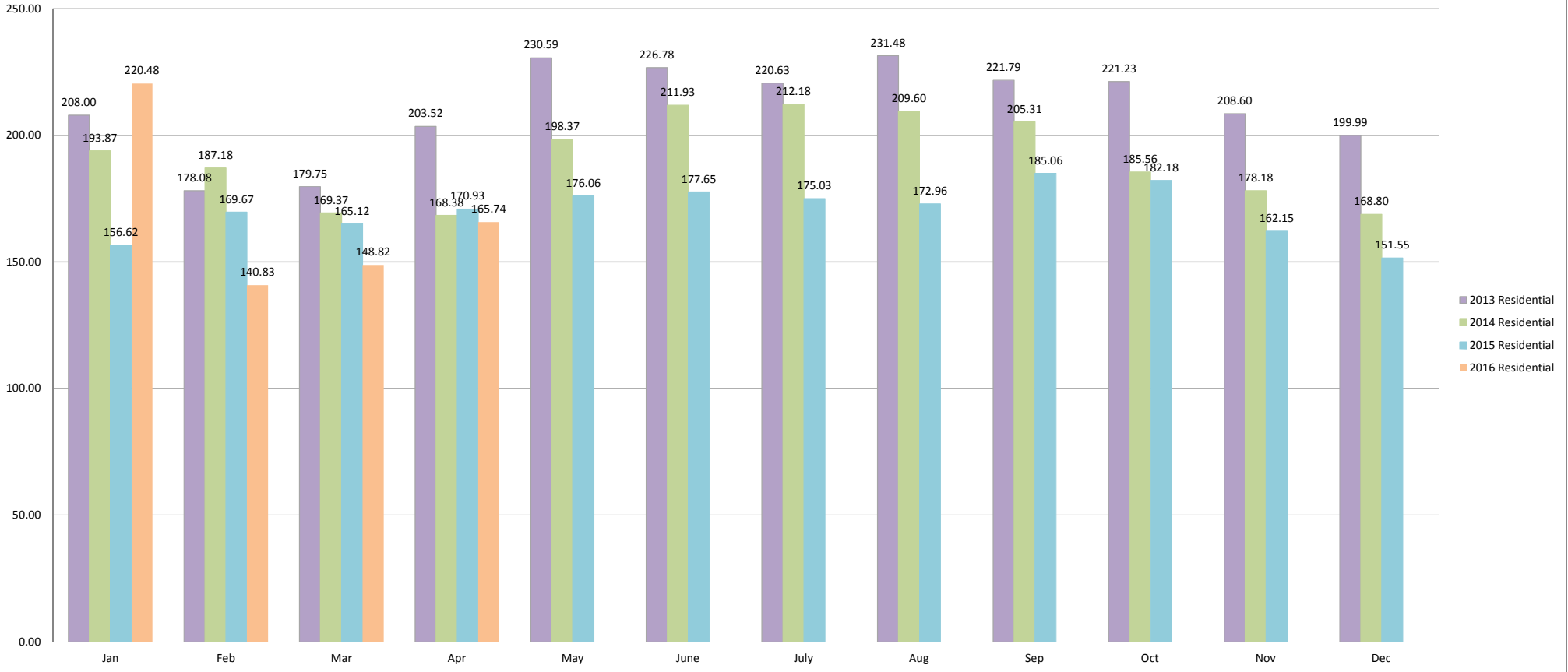
2013-2016 Single Family Consumption by Month (Acre-Feet)



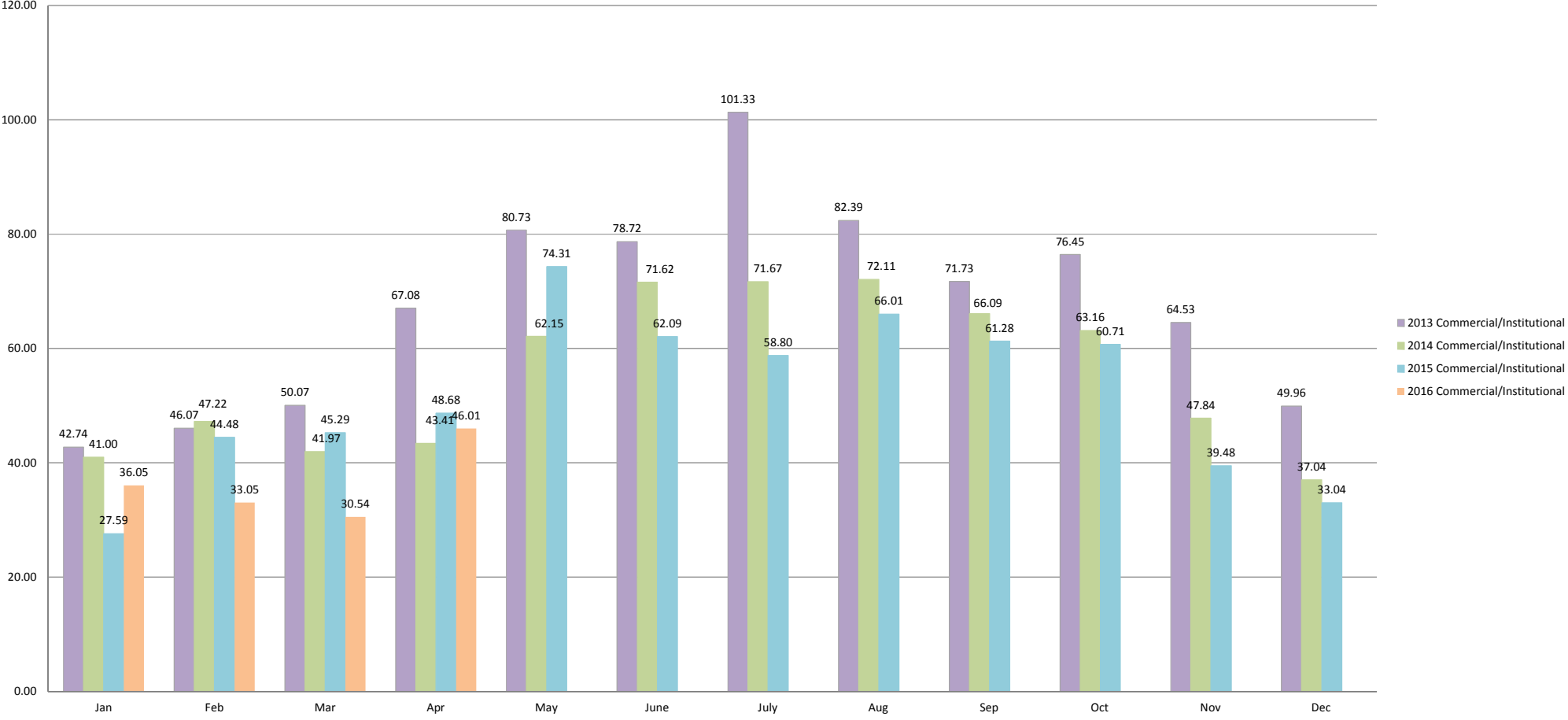
2013-2016 Multi-Family Total Consumption by Month (Acre-Feet)



2013-2016 Residential Total Consumption by Month (Acre-Feet) (Single-Family and Multi-family Combined)



2013-2016 Commercial/Institutional Consumption by Month (Acre-Feet)



2013-2016 Landscape Irrigation Consumption by Month (Acre-Feet)

